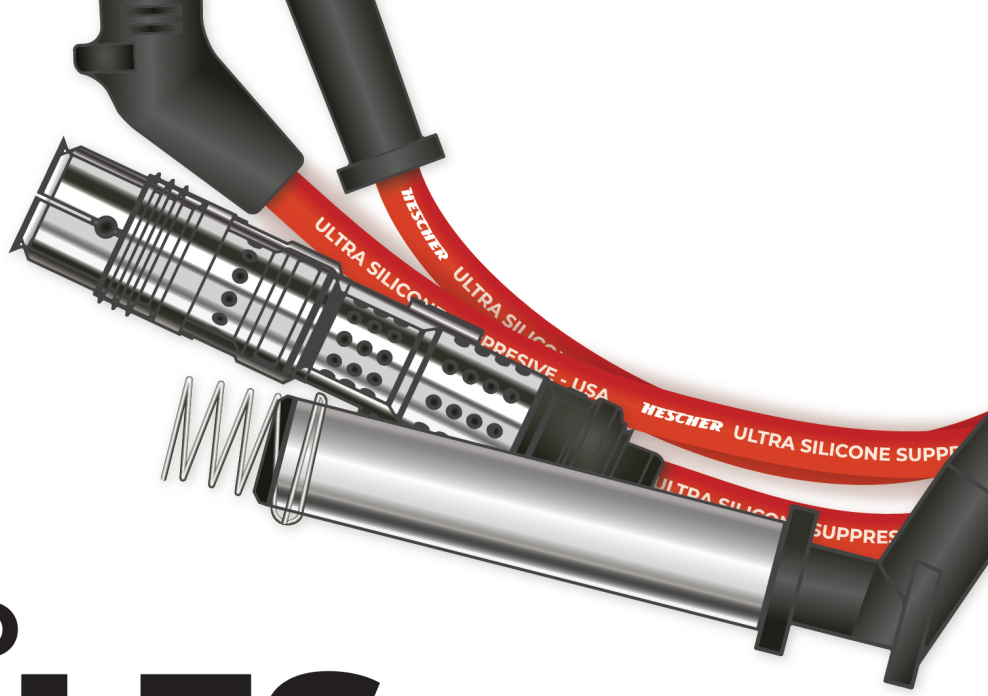




/bujiashescher



CATÁLOGO CABLES DE BUJÍAS HESCHER®



BUJÍAS

HESCHER

#siemprearranca



APLICACIONES



| AUDI | | | | | |
|------------------|--|-------------|-------|-------|-----------|
| A3 | 1.6L 8v - RSH | Nafta / GNC | 01/02 | >> | HW-V1025U |
| CHEVROLET | | | | | |
| Agile | 1.4 8v (92cv) | Nafta / GNC | 01/09 | >> | HW-C1073U |
| Aveo | 1.6 16v - DOHC (103cv - FAM) | Nafta / GNC | 01/04 | >> | HW-C1003U |
| Classic | 1.4 8v - MPFI (92cv) | Nafta / GNC | | | HW-C1073U |
| Cobalt | 1.8 8v (105cv) | Nafta / GNC | | | HW-C1073U |
| Corsa | 1.0 8v - MPFI (L11 - sin distribuidor) | Nafta / GNC | 01/00 | >> | HW-C1073U |
| Corsa | 1.4 8v - MPFI (LQ5 - sin distribuidor) | Nafta / GNC | 01/96 | >> | HW-C1073U |
| Corsa | 1.6 8v - MPFI (L01 - sin distribuidor) | Nafta / GNC | 01/96 | >> | HW-C1073U |
| Corsa | 1.8 8v - MPFI (LJ1) | Nafta / GNC | 01/02 | >> | HW-C1073U |
| Corsa Classic | 1.6 8v - Powertech | Nafta / GNC | 01/96 | >> | HW-C1073U |
| Corsa Pick-up | 1.6 8v - MPFI (L01) | Nafta / GNC | 01/96 | >> | HW-C1073U |
| Corsa Wagon | 1.6 8v - MPFI (92cv - L01) | Nafta / GNC | 01/97 | >> | HW-C1073U |
| Meriva GL | 1.8 8v - SOHC MPFI | Nafta / GNC | 01/02 | >> | HW-C1073U |
| Meriva GLS | 1.8 8v - SOHC MPFI | Nafta / GNC | 01/02 | >> | HW-C1073U |
| Montana | 1.8 8v | Nafta / GNC | 01/03 | >> | HW-C1073U |
| Onix | 1.4 8v (98cv) | Nafta / GNC | 01/13 | >> | HW-C1101U |
| Prisma | 1.4 8v - SPE (98cv) | Nafta / GNC | 01/13 | >> | HW-C1101U |
| Spin | 1.8 8v (105cv) | Nafta / GNC | | | HW-C1073U |
| CITROËN | | | | | |
| Berlingo | 1.8i - XU7JB | Nafta / GNC | | | HW-C2001U |
| Xsara | 1.8i 8v - XU7JP | Nafta / GNC | 01/98 | 12/01 | HW-C2001U |
| ZX | 1.8i 8v - XU7JP | Nafta / GNC | 01/93 | >> | HW-C2001U |
| FIAT | | | | | |
| 128 | 1.1 | Nafta / GNC | 01/71 | 12/91 | HW-F1004U |
| 128 | 1.3 | Nafta / GNC | 01/71 | 12/91 | HW-F1004U |
| 500 | 1.4 8v - Fire EVO (85cv) | Nafta / GNC | | | HW-F1064U |
| Brava | 1.6 16v - MPI | Nafta / GNC | | | HW-F1008U |
| Bravo | 1.6 16v - MPI | Nafta / GNC | | | HW-F1008U |
| Brio | 1.1 - motor 1116 | Nafta / GNC | 01/87 | 12/91 | HW-F1004U |
| Duna | 1.3 | Nafta / GNC | 01/88 | 01/91 | HW-F1004U |
| Duna | 1.5 (Brasilero) | Nafta / GNC | 01/88 | 01/91 | HW-F1004U |
| Europa | 1.1 - motor 1116 / 138 B3 038 | Nafta / GNC | 01/71 | 12/91 | HW-F1004U |
| Europa | 1.3 - motor 1116 / 138 B3 038 | Nafta / GNC | 01/71 | 12/91 | HW-F1004U |
| Fiorino | 1.3 8v - Fire (68cv) | Nafta / GNC | 01/04 | >> | HW-F1006U |
| Grand Siena | 1.4 - Fire EVO (87cv) | Nafta / GNC | 01/12 | >> | HW-F1064U |
| Grand Siena | 1.6 16v - E.torQ (115cv) | Nafta / GNC | 01/12 | 02/13 | HW-F1066U |
| Idea | 1.6 16v - E.torQ (115cv) | Nafta / GNC | 01/12 | 02/13 | HW-F1066U |
| Idea | 1.8 8v | Nafta / GNC | 01/05 | >> | HW-C1073U |
| Linea | 1.8 16v (130cv) | Nafta / GNC | 01/12 | 02/13 | HW-F1066U |
| Marea SX | 1.6 16v | Nafta / GNC | 01/05 | >> | HW-F1008U |
| Palio | 1.3 8v - Fire | Nafta / GNC | 01/03 | >> | HW-F1006U |
| Palio | 1.3 16v - Fire | Nafta / GNC | 01/00 | >> | HW-F1002U |
| Palio | 1.4 8v - Fire (82cv) | Nafta / GNC | 01/06 | >> | HW-F1009U |
| Palio | 1.4 8v - Fire EVO (85cv) | Nafta / GNC | 01/12 | >> | HW-F1064U |
| Palio | 1.6 16v - MPI | Nafta / GNC | | | HW-F1008U |
| Palio | 1.6 16v - E.torQ (115cv) | Nafta / GNC | 01/12 | 02/13 | HW-F1066U |
| Palio Adventure | 1.8 8v - Powertrain | Nafta / GNC | 01/05 | >> | HW-C1073U |
| Palio | 1.8 8v - Powertrain - HLX | Nafta / GNC | 01/05 | >> | HW-C1073U |
| Palio Weekend | 1.4 8v - Fire (82cv) | Nafta / GNC | 01/06 | >> | HW-F1009U |
| Palio Weekend | 1.6 16v | Nafta / GNC | 01/97 | 12/03 | HW-F1008U |
| Palio Weekend | 1.8 8v | Nafta / GNC | 01/03 | >> | HW-C1073U |
| Punto | 1.4 8v - Fire | Nafta / GNC | 01/07 | >> | HW-F1009U |
| Punto | 1.6 16v - E.torQ (115cv) | Nafta / GNC | 01/12 | 02/13 | HW-F1066U |
| Punto | 1.8 8v (110cv) | Nafta / GNC | 01/07 | >> | HW-C1073U |
| Regatta | 1.5 - motor 138 B3 038 | Nafta / GNC | 01/80 | 12/91 | HW-F1004U |
| Siena | 1.3 16v - Fire | Nafta / GNC | 01/01 | 12/07 | HW-F1002U |
| Siena | 1.6 16v - MPI | Nafta / GNC | | | HW-F1008U |
| Siena | 1.6 16v - E.torQ (115cv) | Nafta / GNC | 01/12 | 02/13 | HW-F1066U |
| Siena | 1.8 8v - HLX (105cv) | Nafta / GNC | 01/05 | >> | HW-C1073U |
| Siena | 1.8 8v - Powertrain | Nafta / GNC | 01/05 | >> | HW-C1073U |
| Stilo | 1.8 8v - SOHC | Nafta / GNC | 01/02 | >> | HW-C1073U |
| Strada | 1.4 8v - Fire (87cv) | Nafta / GNC | 01/09 | >> | HW-F1009U |
| Strada | 1.6 16v - E.torQ (115cv) | Nafta / GNC | 01/12 | 02/13 | HW-F1066U |
| Strada | 1.8 8v - MPI (105cv) | Nafta / GNC | 01/05 | >> | HW-C1073U |
| Strada Adventure | 1.8 8v - MPI (105cv) | Nafta / GNC | 01/05 | >> | HW-C1073U |
| Super Europa | 1.3 - motor 1116 / 138 B3 038 | Nafta / GNC | 01/71 | 12/91 | HW-F1004U |
| Super Europa | 1.5 - motor 1116 / 138 B3 038 | Nafta / GNC | 01/71 | 12/91 | HW-F1004U |

APLICACIONES



FIAT (continuación)

| | | | | | |
|-----------|--|-------------|-------|-------|-----------|
| Uno | 1.3 8v - Fire (con dos bobinas apartadas) | Nafta / GNC | 01/04 | 12/05 | HW-F1006U |
| Uno | 1.3 8v - Fire (bobina con uno solo cuerpo, 68cv) | Nafta / GNC | 01/06 | >> | HW-F1009U |
| Uno | 1.3 | Nafta / GNC | 01/88 | 12/91 | HW-F1004U |
| Uno | 1.5 - (brasileiro) | Nafta / GNC | 01/88 | 12/91 | HW-F1004U |
| Uno | 1.4 8v - EVO (85cv) | Nafta / GNC | | | HW-F1064U |
| Uno Cargo | 1.4 8v- EVO (87cv) | Nafta / GNC | | | HW-F1064U |

FORD

| | | | | | |
|--------------|-------------------------------|-------------|-------|-------|-----------------------|
| Courier | 1.6 8v - Zetec Rocam (95cv) | Nafta / GNC | 01/05 | >> | HW-F2002U / HW-F2030U |
| Courier | 1.6 8v - Zetec Rocam | Nafta / GNC | 01/09 | >> | HW-F2030U |
| Ecosport XLS | 1.6 8v - Zetec Rocam (SOHC) | Nafta / GNC | 01/03 | >> | HW-F2002U / HW-F2030U |
| Ecosport | 1.6 8v - Zetec Rocam | Nafta / GNC | 01/09 | >> | HW-F2030U |
| Ecosport | 1.6 16v - Sigma (110cv - BUA) | Nafta / GNC | | | HW-F2035U |
| Escort | 1.6 8v - Zetec Rocam | Nafta / GNC | 01/99 | >> | HW-F2002U |
| Fiesta | 1.6 8v - Zetec Rocam | Nafta / GNC | 01/02 | >> | HW-F2002U / HW-F2030U |
| Fiesta | 1.6 8v - Zetec Rocam | Nafta / GNC | 01/09 | >> | HW-F2030U |
| Fiesta | 1.6 16v TiVCT - Sigma (120cv) | Nafta / GNC | 01/13 | >> | HW-F2035U |
| Focus | 1.6 8v - Zetec Rocam | Nafta / GNC | 01/05 | >> | HW-F2002U / HW-F2030U |
| Focus | 1.6 8v - Zetec Rocam | Nafta / GNC | 01/09 | >> | HW-F2030U |
| Focus | 1.6 16v TiVCT - Sigma (125cv) | Nafta / GNC | 01/14 | >> | HW-F2035U |
| Ka | 1.0 8v - Zetec Rocam | Nafta / GNC | 01/99 | 12/07 | HW-F2002U / HW-F2030U |
| Ka | 1.6 8v - Zetec Rocam | Nafta / GNC | 01/99 | 12/07 | HW-F2002U / HW-F2030U |
| Ka | 1.5 16v - Sigma | Nafta / GNC | 08/15 | >> | HW-F2035U |
| Ka | 1.0 8v - Zetec Rocam (63cv) | Nafta / GNC | 01/08 | >> | HW-F2030U |
| Ka Fly Viral | 1.6 8v - Zetec Rocam (95cv) | Nafta / GNC | 01/08 | >> | HW-F2030U |
| Ka Pulse | 1.6 8v - Zetec Rocam (95cv) | Nafta / GNC | 01/08 | >> | HW-F2030U |
| Ka Top Pulse | 1.6 8v - Zetec Rocam (95cv) | Nafta / GNC | 01/08 | >> | HW-F2030U |
| Ka+ | 1.5 16v - Sigma (105cv) | Nafta / GNC | 01/16 | >> | HW-F2035U |

PEUGEOT

| | | | | | |
|---------|--------------------------|-------------|-------|-------|-----------|
| 205 | 1.4 8v Xsi - TU3MC | Nafta / GNC | 07/92 | 12/98 | HW-P1001U |
| 306 | 1.8 Xsi - XU7JP - LFZ | Nafta / GNC | 01/96 | 12/99 | HW-C2001U |
| 405 | 1.6 8v - XU5M / XU5JP | Nafta / GNC | 04/95 | 12/97 | HW-C2001U |
| 405 | 1.8 8v - XU7JP | Nafta / GNC | 01/92 | >> | HW-C2001U |
| Partner | 1.8 - XU7JB | Nafta / GNC | 01/97 | 12/03 | HW-C2001U |
| Clio | 1.2 16v - D4F (75cv) | Nafta / GNC | 01/07 | >> | HW-R1016U |
| Clio | 1.2 16v - D4F 740 (75cv) | Nafta / GNC | | | HW-R1016U |
| Clio | 1.6 8v - C3L | Nafta / GNC | >> | 12/99 | HW-R1006U |
| Clio II | 1.6i - K7M | Nafta / GNC | 07/98 | >> | HW-R1013U |
| Kangoo | 1.6 8v - K7M | Nafta / GNC | 01/98 | >> | HW-R1013U |
| Logan | 1.6 8v - K7M (90cv) | Nafta / GNC | | | HW-R1013U |
| Megane | 1.6 8v - K7M | Nafta / GNC | 01/98 | >> | HW-R1013U |
| R19 | 1.6 8v - C3L | Nafta / GNC | >> | 12/99 | HW-R1006U |
| Sandero | 1.6 8v (85cv) | Nafta / GNC | 01/14 | >> | HW-R1013U |
| Scénic | 1.6 8v - K7M | Nafta / GNC | 01/98 | >> | HW-R1013U |
| Symbol | 1.6 8v - K7M (90cv) | Nafta / GNC | 01/09 | >> | HW-R1013U |

SUZUKI

| | | | | | |
|-----|-----|-------------|-------|----|-----------|
| Fun | 1.0 | Nafta / GNC | 01/03 | >> | HW-C1073U |
| Fun | 1.4 | Nafta / GNC | 01/04 | >> | HW-C1073U |

VOLKSWAGEN

| | | | | | |
|--------------|---------------------------|-------------|-------|----|-----------|
| CrossFox | 1.6 8v - EA 111 RSH | Nafta / GNC | 01/03 | >> | HW-V1025U |
| CrossFox | 1.6 8v | Nafta / GNC | | | HW-V1025U |
| Fox | 1.6 8v - EA 111 RSH | Nafta / GNC | 01/03 | >> | HW-V1025U |
| Fox | 1.6 8v | Nafta / GNC | | | HW-V1025U |
| Gol | 1.4 - CNBA (83cv) | Nafta / GNC | | | HW-V1025U |
| Gol | 1.6 | Nafta / GNC | 01/97 | >> | HW-V1018U |
| Gol | 1.8 Mi | Nafta / GNC | 01/97 | >> | HW-V1018U |
| Gol Country | 1.6 | Nafta / GNC | 01/97 | >> | HW-V1018U |
| Gol Country | 1.8 | Nafta / GNC | 01/97 | >> | HW-V1018U |
| Gol Country | 2.0 AP Mi | Nafta / GNC | 01/97 | >> | HW-V1018U |
| Gol | 1.6 8v (sin distribuidor) | Nafta / GNC | 01/09 | >> | HW-V1030U |
| Golf | 1.6 8v - EA 111 RSH | Nafta / GNC | 01/01 | >> | HW-V1025U |
| Polo Classic | 1.6 8v - RSH EA 111 | Nafta / GNC | 01/02 | >> | HW-V1025U |
| Saveiro | 1.6 | Nafta / GNC | 01/97 | >> | HW-V1018U |
| Saveiro | 1.8 | Nafta / GNC | 01/97 | >> | HW-V1018U |
| Saveiro | 2.0 AP Mi | Nafta / GNC | 01/97 | >> | HW-V1018U |
| Saveiro | 1.6 8v | Nafta / GNC | | | HW-V1025U |
| Suran | 1.6 8v EA 111 RSH | Nafta / GNC | 01/06 | >> | HW-V1025U |
| Voyage | 1.6 (101cv) | Nafta / GNC | | | HW-V1025U |

EQUIVALENCIAS

| HESCHER | OEM | NGK | BOSCH | LUCAS | MAGNETI MARELLI | FERRAZZI |
|-----------|---------------|---------|---------------|-------------|-----------------|----------|
| HW-C1003U | 96497773 | SC-G03 | F 000 99C 590 | LEIHTG03SC | CC 2009 MM | 02-1793 |
| HW-C1073U | 93235772 | SC-G73 | F 000 99C 012 | LEIHTG73SC | CC 2012 MM | 02-1796 |
| HW-C1101U | 2635046 | SC-G101 | - | LEIHTG101SC | CC 4001 MM | 02-1731 |
| HW-C2001U | 5967-L0 | SC-H01 | F 000 99C 087 | - | CC 2124 MM | 07-1777 |
| HW-F1002U | 4674 3086 | SC-T02 | F 000 99C 122 | LEIHTT02SC | CC 2079 MM | 05-1762 |
| HW-F1004U | - | SC-T04 | - | - | CC 2067 MM | 05-1744 |
| HW-F1006U | 4674 3085 | SC-T06 | F 000 99C 110 | LEIHTT06SC | CC 2080 MM | 05-1763 |
| HW-F1008U | 4641 3088 | SC-T08 | F 000 99C 071 | LEIHTT08SC | CC 2071 MM | 05-1751 |
| HW-F1009U | 5518 7805 | SC-T09 | F 000 99C 130 | LEIHTT09SC | CC 2082 MM | 05-1766 |
| HW-F1064U | 5522 6246 | SC-T64 | F 000 99C 147 | LEIHTT64SC | CC 2083 MM | 05-1767 |
| HW-F1066U | 5522 6249 | SC-T66 | F 000 99C 143 | LEIHTT66SC | CC 2085 MM | 05-1770 |
| HW-F2002U | C0-5982 | SC-F02 | F 000 99C 076 | LEIHTF02SC | CC 2059 MM | 04-1789 |
| HW-F2030U | - | SC-F30 | - | LEIHTF30CS | CC 2310 MM | 04-1797 |
| HW-F2035U | 1 114 744 | SC-F35 | F 000 99C 627 | LEIHTF35SC | CC 2063 MM | 04-1799 |
| HW-P1001U | 5967-P1 | SC-P01 | - | - | CC 2126 MM | 07-1780 |
| HW-R1006U | - | SC-R06 | F 000 99C 086 | - | CC 2093 MM | 06-1715 |
| HW-R1013U | 82 00 943 801 | SC-R13 | F 000 99C 135 | LEIHTR13SC | CC 2101 MM | 06-1730 |
| HW-R1016U | 82 00 713 680 | SC-R16 | F 000 99C 626 | LEIHTR16SC | CC 2118 MM | 06-1796 |
| HW-V1018U | 0 269 054 319 | ST-V18 | F 000 99C 082 | LEIHTV19ST | CC 2019 MM | 03-1704 |
| HW-V1025U | 032 905 409 B | ST-V25 | F 000 99C 125 | LEIHTV25ST | CC 1967 MM | 03-1739 |
| HW-V1030U | - | ST-V30 | F 000 99C 127 | LEIHTV30ST | CC 2033 MM | 03-1759 |

TABLA CODIFICACIÓN

| | | | | |
|----------|----------|-----------|------------|----------|
| H | W | F1 | 030 | U |
|----------|----------|-----------|------------|----------|

| REF.HESCHER | REF.PRODUCTO | REF.MARCA | Nº DE CABLE | REF. LÍNEA |
|-------------|----------------|-----------|-------------|------------|
| Hescher | Cable de bujía | Ver tabla | Nº modelo | Ultra |

CHEVROLET
CITROËN
FIAT
FORD

C1
C2
F1
F2

PEUGEOT
RENAULT
VOLKSWAGEN

P1
R1
V1



SUPRESIÓN FERROMAGNÉTICA

... Malla de aislación de NÍQUEL- CROMO. Evita toda interferencia electromagnética.



DESARROLLADO PARA GNC

... Supera los requerimientos de los sistemas de inyección a gas.



CABLE DE SILICONA

... Íntegramente fabricado en Estados Unidos. Preparado para las mayores exigencias del vehículo.



FABRICADO BAJO NORMAS INTERNACIONALES

... ISO 3808:2002
SAE J2031:2012
SAE J2032:2014



SOPORTA ALTAS TEMPERATURAS

... Resiste temperaturas superiores a los 200°C.



MODELO



MOTOR

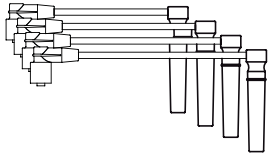


COMBUSTIBLE

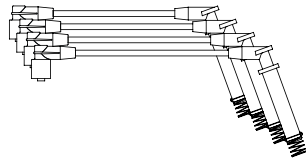


AÑO DE FABRICACIÓN

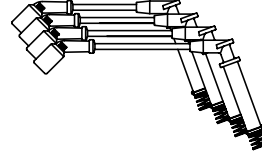
DIBUJOS TÉCNICOS



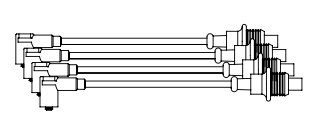
CHEVROLET
HW-C1003U



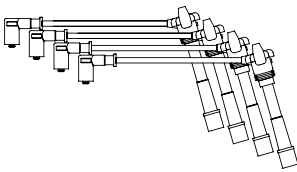
CHEVROLET / FIAT / SUZUKI
HW-C1073U



CHEVROLET
HW-C1101U



CITROËN / PEUGEOT
HW-C2001U



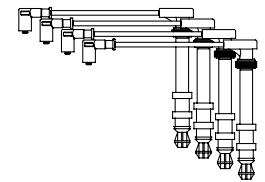
FIAT
HW-F1002U



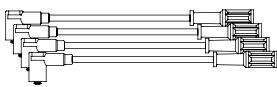
FIAT
HW-F1004U



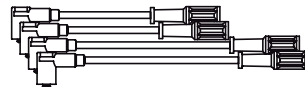
FIAT
HW-F1006U



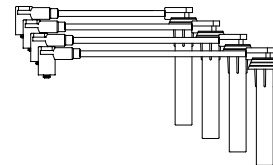
FIAT
HW-F1008U



FIAT
HW-F1009U



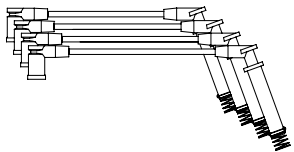
FIAT
HW-F1064U



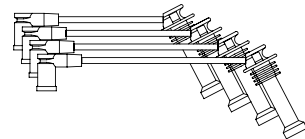
FIAT
HW-F1066U



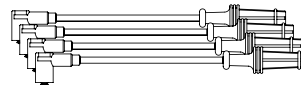
FORD
HW-F2002U



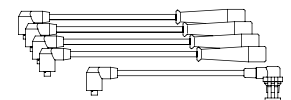
FORD
HW-F2030U



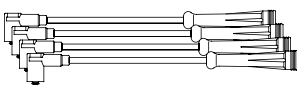
FORD
HW-F2035U



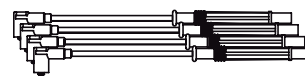
PEUGEOT
HW-P1001U



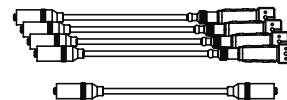
RENAULT
HW-R1006U



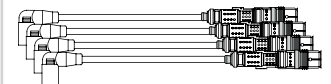
RENAULT
HW-R1013U



RENAULT
HW-R1016U



VOLKSWAGEN
HW-V1018U



AUDI / VOLKSWAGEN
HW-V1025U / HW-V1030U



¡ESCANÉAME!

BUJÍAS

HESCHER

#siemprearranca

PASO 1



CABLEADO

Sujete firme y tire de cada terminal para retirar los cables viejos.

PASO 2



NO UTILIZAR HERRAMIENTAS

No retire los cables haciendo uso de herramientas o tirando de los mismos.

PASO 3



TERMINALES

Recuerde presionar los terminales para que el contacto con las bujías, bobina o distribuidor sea perfecto

www.bujiashescher.com.ar

ESTA EDICIÓN REEMPLAZA A TODAS LAS ANTERIORES. IMPRESO EN 08/21